

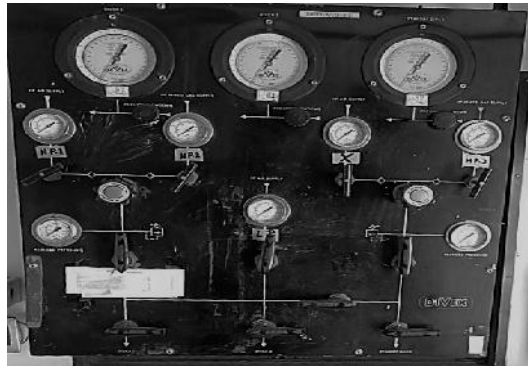


SUPREME HYDRO ENGG. PVT. LTD

"AIR DIVING SYSTEM"

"IMCA COMPLIED"

SHEPL Air Dive System are fully integrated into 20 feet ISO containers allowing rapid and efficient mobilization and deployment of the system



20 Feet Container with 1 x 3 Diver Air Dive panel, 1 X CCTV System, 2 X Amron Radio 1 x 60" Twin lock DDC	Weight : 6.0 Ton
--	------------------

A-Frame with Dive Basket (LARS)	Weight: 3.5 T, SWL : 1.5 T
---------------------------------	----------------------------

Electrical Power Requirement	440 V, 60 Hz, 35 KW
-------------------------------------	---------------------

CONTAINERISED DDC

Chamber	60"
Medical Lock	Yes with interlock fitted
Design Standard	DNV (PVHO)
Testing/Certification Standard	IMCA D023
Climate Control	Air Conditioner

DIVE CONTROL

Capability	Air Diving
Capacity	2 Divers Simultaneously
U/w video system & Hat Light	Yes
Knife Switch	Yes
Gas Storage Bank	2 nos (16 cly x 10 cu.m(air))

MACHINERY DETAILS

KMB 18 Helmet	01 no.
KMB Superlight 37B	02 nos.
Divers Umbilical (150 mtrs)	03 nos.
LP Compressor	02 nos.
HP Compressor	01 nos.

APPLICABLE CODES & STANDARDS

1. IMCA D023 Rev 1 Jan 2014
D.E.S.I.G.N. For Surface Orientated Diving Systems.
2. IMCA International Code of Practice for Offshore Diving.
3. AODC Guidance Notes, Recommendations & Codes of Practice.

Specifications subject to change without notice



REGISTERED OFFICE

SUPREME HYDRO ENGG. PVT. LTD

5th Floor,505/506, Man Excellenza, S.V Road, Opp.Pawan Hans,
Vile Parle (West) Mumbai-400 056

